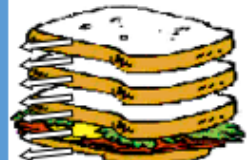




BINARY FORM
(AB)



TERNARY FORM
(AB)



RONDO FORM
(ABACADAE..)



Largo - Slow



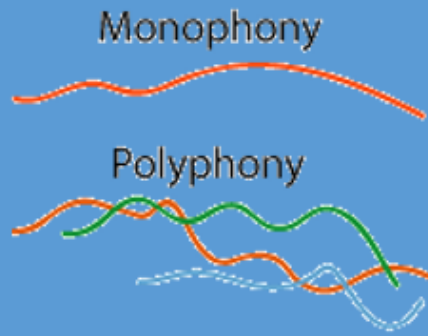
Andante - Walking Pace



Allegro - Lively



Presto - Fast



Monophony

ONE or a few instruments / parts playing

MONO = One

Polyphony

LOTS of instruments / parts playing

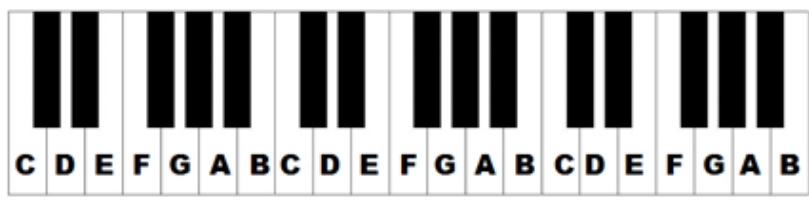
POLY = Many

BASELINE TESTING

- Tempo** – How fast / slow
- Dynamics** – How loud / soft
- Timbre** – Types of sounds
- Texture** – How many instruments are playing
- Pitch** – How high or low
- Rhythm** – how long or short the notes are
- Structure** – the order of the different sections of music

The musical alphabet goes from A-G

A B C D E F G ~~X~~



← *b*'s Flats

→ #*'s* Sharps

LETTER(S)	WORD	MEANING
pp	pianissimo	Very Quiet
p	piano	Quiet
mp	mezzopiano	Quite Quiet
mf	mezzoforte	Quite Loud
f	forte	Loud
ff	fortissimo	Very Loud

Intro - Beginning

Verse – lyrics change each verse

Chorus – same lyrics each time

Verse – lyrics change each verse

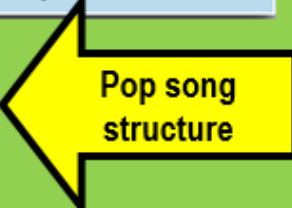
Chorus – same lyrics each time

Middle 8
Bridge – new lyrics, new melody

Chorus – same lyrics each time

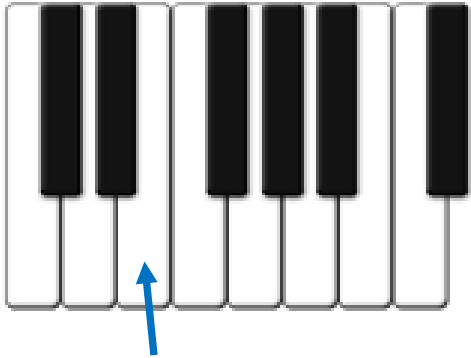
Chorus – same lyrics each time

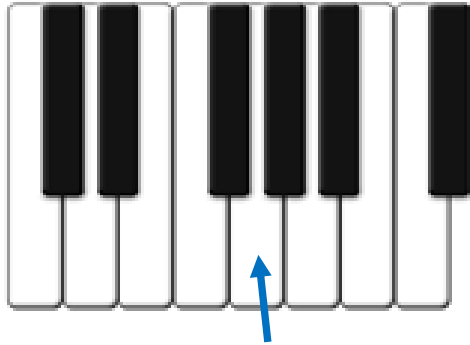
Outro - Ending

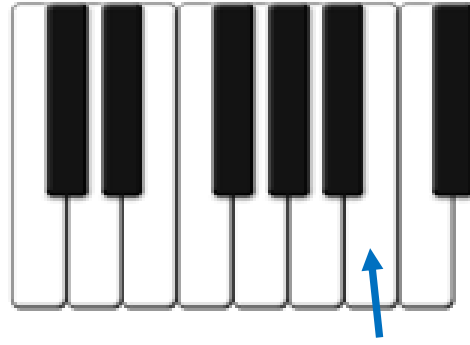


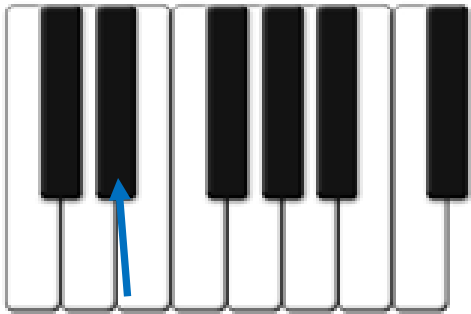
Notes on the Keyboard

Name these notes

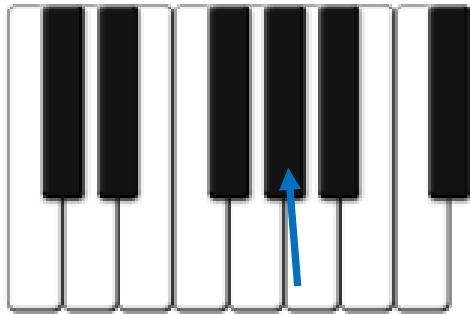




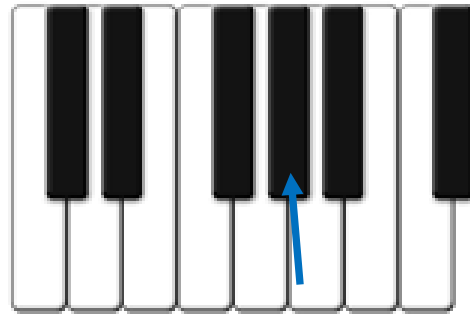




b



#



b

DO NOW: Name the notes on the Keyboard

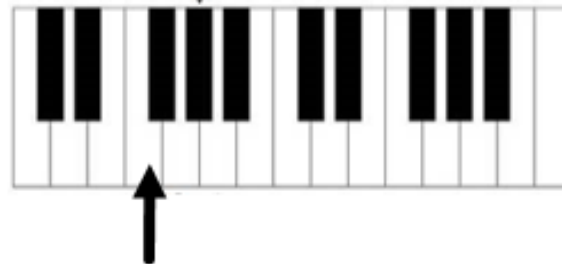
1.



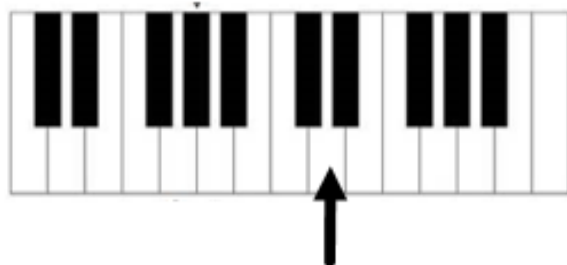
2.



3.



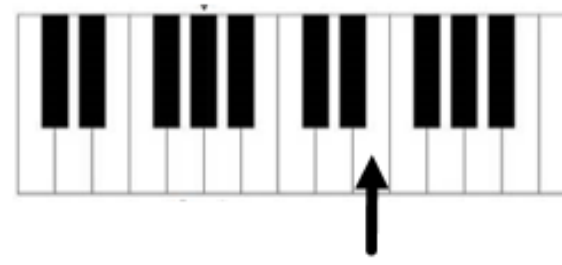
4.



5.



6.



7.



8.



9.



Do Now - Word Match Up



Tempo		How loud or quiet the music is
Dynamics		How many instruments are playing (Thick = lots, Thin = a few)
Pitch		How fast or slow the music is
Timbre		The type of instruments playing
Texture		How high or low the music is

DO NOW:

What are the three sections you need in your Sci-Fi composition?

Section 1:

Section 2:

Section 3:

Musical Elements

C	O	M	P	O	S	I	N	G	O	E	N	H	E
R	G	I	C	G	C	F	T	R	H	Y	T	H	M
E	C	C	U	R	T	I	I	I	R	S	T	D	N
C	C	Y	U	Y	O	P	M	E	T	U	S	I	T
D	Y	N	A	M	I	C	S	M	P	I	T	C	H
E	M	C	P	F	G	O	S	E	N	M	M	N	H
Y	N	I	O	C	C	N	R	I	N	I	T	Y	Y
C	E	O	P	C	N	U	I	T	B	I	T	U	Y
T	U	I	R	D	T	T	I	N	M	C	G	E	R
P	N	G	E	X	O	T	N	B	E	N	R	M	U
M	E	P	E	F	D	N	R	R	E	T	S	R	T
M	P	T	R	H	S	E	R	O	S	P	S	R	T
M	S	P	E	R	F	O	R	M	I	N	G	I	Y
S	T	R	U	C	T	U	R	E	E	R	R	T	L

TEMPO
LISTENING
PERFORMING
TIMBRE
RHYTHM
PITCH
DYNAMICS
COMPOSING
STRUCTURE
TEXTURE

<u>Musical Element</u>	<u>Meaning</u>
Tempo	
Pitch	
Dynamics	
Rhythm	
Texture	
Timbre	
Structure	

DO NOW: Put these Dynamic Markings in the correct order from quietest to loudest

p, f, ff, mp, mf, pp

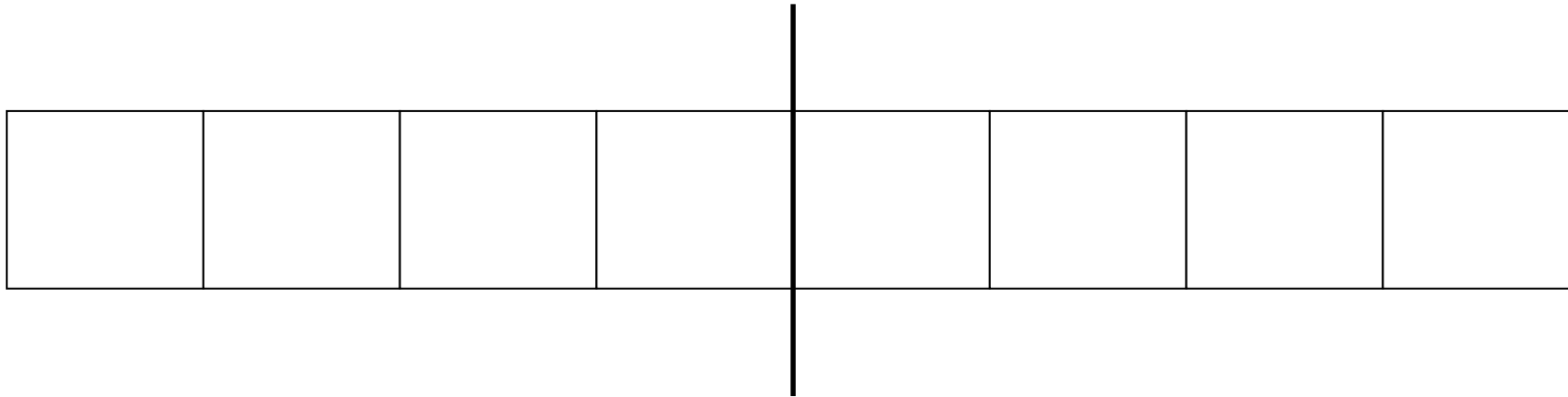
Extension: Write the full names of the Dynamic markings underneath

pp

pianissimo

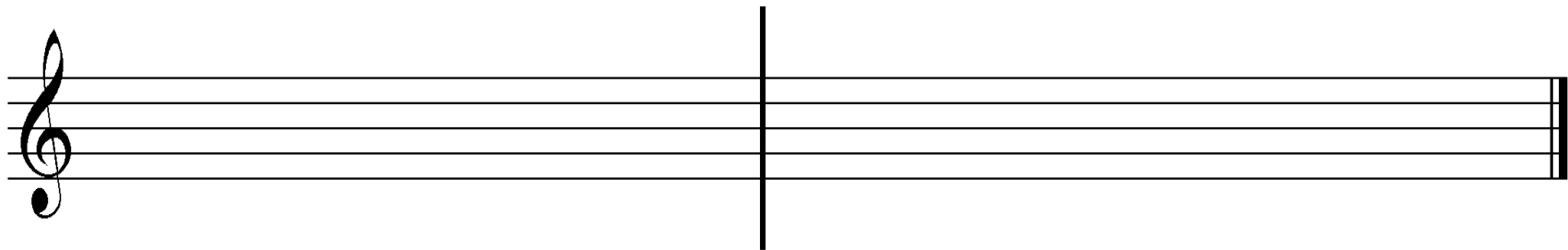
Writing a Rhythm

Using the note / rest values fill up the 8 boxes (beats)



Adding Pitch

Now using your rhythm above create a melody by giving each note a pitch. Write the name of the note under the staff.



EXTENSION TASK

Music and Maths

Write the answer to the equations below as a musical note:

$$\text{Quarter Note} + \text{Quarter Note} =$$

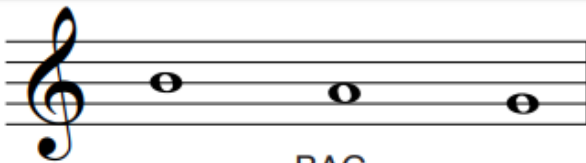
$$\text{Half Note} - \text{Quarter Note} - \text{Quarter Note} =$$

$$\text{Whole Note} - \text{Quarter Note} =$$

$$\text{Eighth Note} \times \text{Whole Note} =$$

Music and English

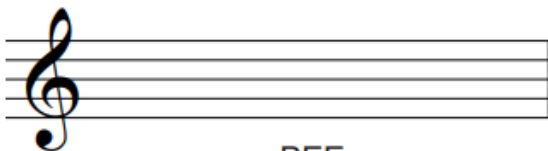
Using the musical alphabet – draw notes on the staff to spell out the words. The first one has been done for you.



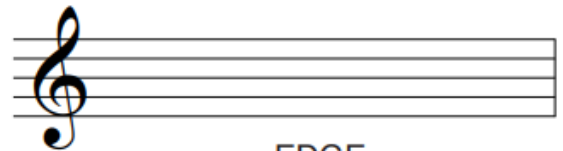
BAG



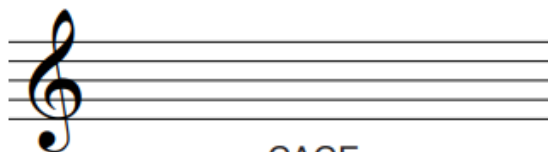
FACE



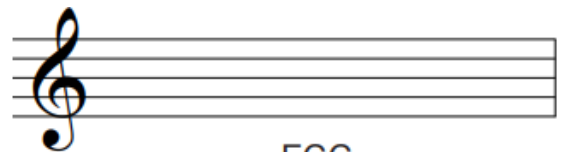
BEE



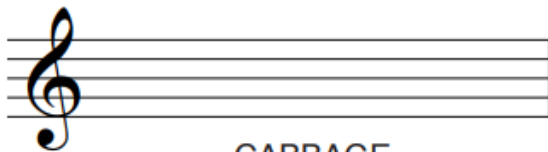
EDGE



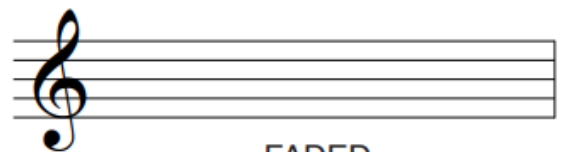
CAGE



EGG



CABBAGE



FADED

DO NOW: Notes on the staff

How many beats do these notes last for?







