

DRUM KIT

Hi-Hats
Has a little cross – represents the two cymbals.

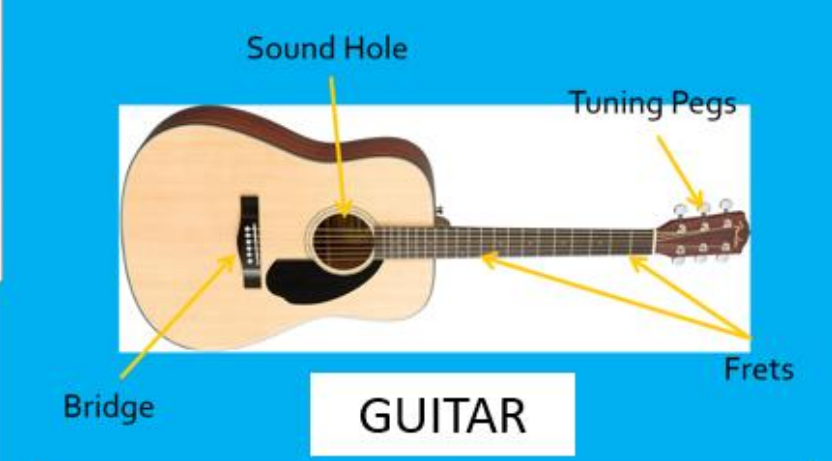
Bass drum
Lowest on the staff, lowest on the drum kit.

Snare
Middle on the staff, middle on the drum kit.

GUITAR AND DRUM SKILLS

Ludwig Van Beethoven wrote 'Für Elise.'
He went completely deaf aged 40.

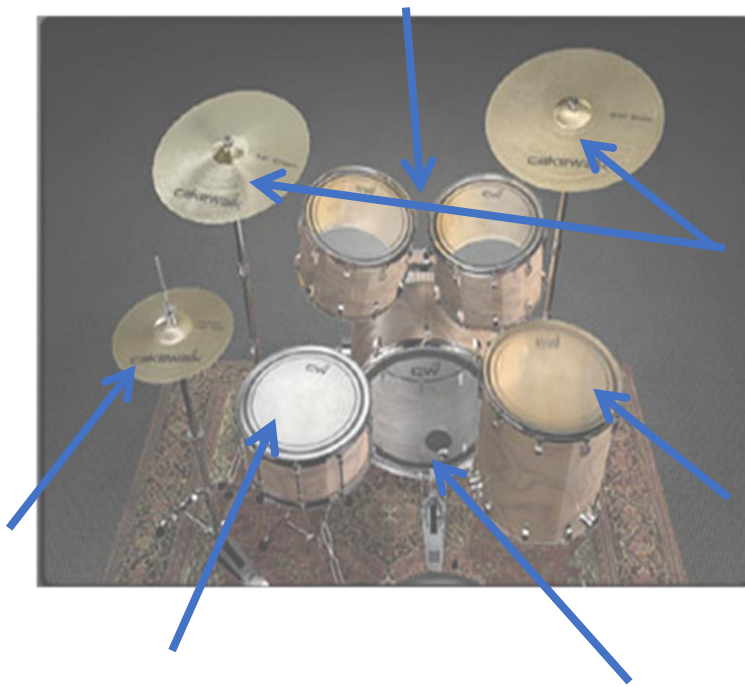
- Tempo** – How fast / slow
- Dynamics** – How loud / soft
- Timbre** – Types of sounds
- Texture** – How many instruments are playing
- Drum fill** – a short break that 'fills' in the gaps
- Fret** – metal lines on the guitar
- Tab** – music notation for guitar
- Pick** – small plastic triangle used to pluck strings on the guitar.



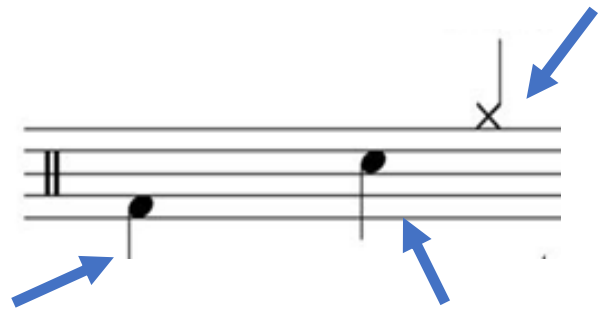
GUITAR



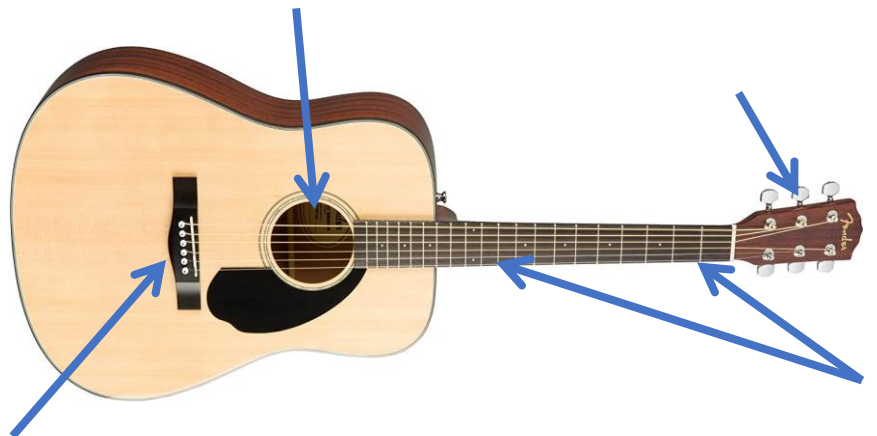
1. Label the parts of the Drum Kit below:



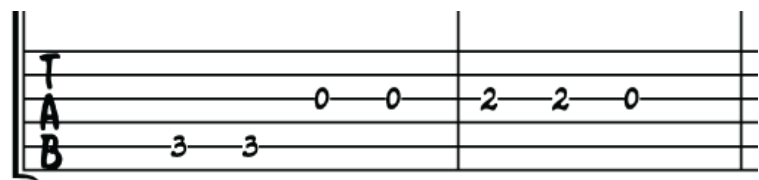
2. Identify which parts of the drum kit are on the Notation below:



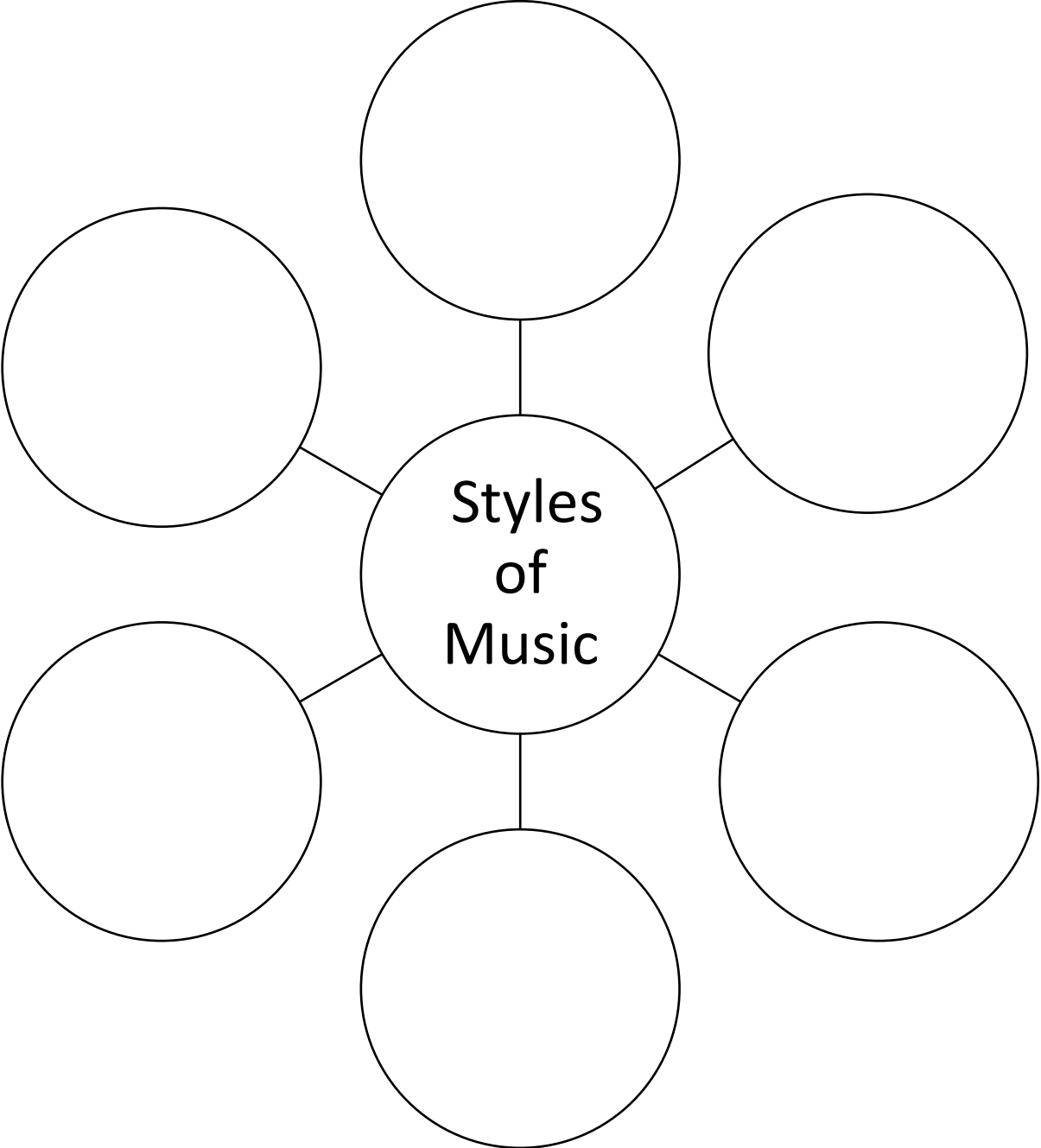
3. Label the parts of the Guitar:



4. Finish the following sentences about Guitar Tab:




- The lines on the Guitar Tab represent the _____.
- The numbers on the Guitar tab represent which _____ to put your finger on.
- 0 on the Guitar Tab means _____.
- The _____ string is the top line of the tab and the _____ string is the bottom line of the tab.





Fact Retrieval

<p>Who wrote the song 'Für Elise?</p> <p>[1 mark]</p>	<p>What do the lines represent on the Guitar Tab</p> <p>[1 mark]</p>	 <p>How long do these notes last for?</p> <p>[2 marks]</p>
<p>What is an arrangement / remix?</p> <p>[1 mark]</p>	<p>What do the numbers represent on the Guitar Tab</p> <p>[1 mark]</p>	<p>Put these dynamic markings in the right order from quietest to loudest.</p> <p>p, mf, pp, ff, f, mp</p> <p>[6 marks]</p>
<p>Identify three skills you need to perform well as a band?</p> <p>[3 marks]</p>	<p>What are the three main parts of the Drum Kit?</p> <p>[3 marks]</p>	<p>What do these 4 tempo markings mean:</p> <p>Largo, Presto, Andante, Allegro</p> <p>[4 marks]</p>

Last week	Last month	Way back!
------------------	-------------------	------------------

Total points /22

Peer Assessed by.....

Year 7 – Guitar & Drum Skills – PEER ASSESSMENT

Learning Question	Success Criteria	Achieved?
<p><u>Week 6</u> <u>Band Skills</u></p> <p>How to perform as a band?</p>	Asp: Perform simple parts. (Playing bass / Electric Guitar part on the keyboard, left hand part on the keyboard, playing same part as someone else.)	
	End: Perform more difficult parts. (Bass Guitar part on the guitar, melody part on the keyboard (one hand))	
	Acc: Perform difficult parts. (Electric Guitar chords, both hands on keyboard, Drum Part (Bass, Snare, Hi Hats and cymbals))	
	Asp: Perform your individual parts sometimes accurately. (You can make some mistakes and stops / pauses throughout.)	
	End: Perform your individual parts mostly accurately. (You can make a few mistakes and only occasional stops / pauses throughout.)	
	Acc: Perform your individual parts accurately. (You can make a few mistakes in the more difficult sections and with only occasional stops / pauses.)	
	Asp: Perform in front of your peers.	
	End: Perform with some confidence. (know your part well)	
	Acc: Perform with confidence (eager to perform, know part, well-rehearsed, take a leading role in your group)	
	Asp: Perform, but song may not be finished or is short.	
	End: Perform a finished song.	
	Acc: Perform a finished song with a well organised structure and ending.	
	Asp: Basic overall standard of performance. (Parts will be accurate, but may not be in time with the band.)	
	End: Good overall standard of performance. (accurate parts, in time)	
Acc: Good overall standard of performance. (Making adjustments, stylistic performance thinking about Dynamics, Tempo and balance of instruments)		

Peer Comment: WWW & EBI: (use the success criteria above to help you)