

DRUM KIT



GUITAR AND

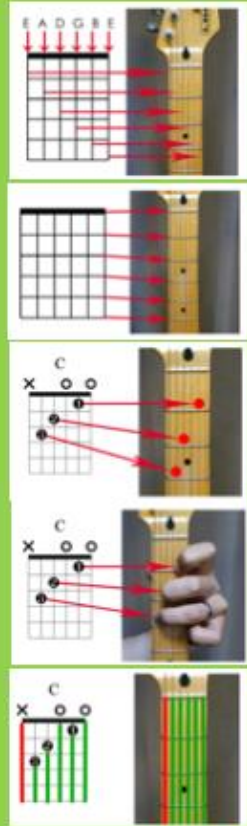


DRUM SKILLS

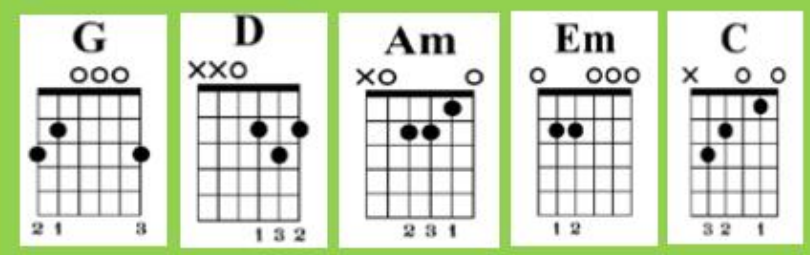
Tempo – How fast / slow
Dynamics – How loud / soft
Timbre – Types of sounds
Texture – How many instruments are playing
Fret – metal lines on the guitar
Tab – music notation for guitar
Drum fill – a short break from the groove that 'fills' in the gaps
Drum Groove – a repeated phrase that sets the tempo
Hook – a catchy part of the song.
Riff – a short and catchy melodic idea that repeats throughout the song.
Distortion – increasing the gain to alter the sound of the Guitar

How to read Guitar Chord Diagrams

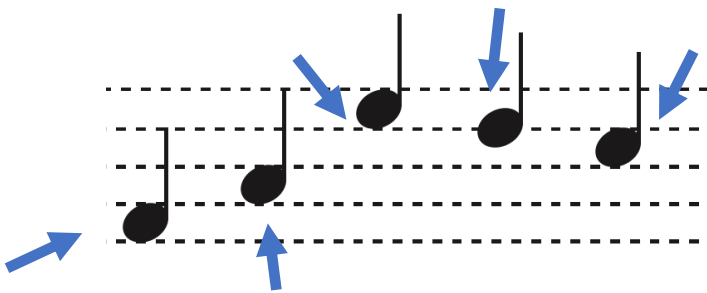
- The vertical lines represent the guitar strings
- The horizontal lines represent the frets with the top line representing the guitar nut
- The black dots represent where you place your fingers
- The numbers tell you which fingers to use
- An 'O' tells you to play a string and an 'X' tells you to not play a string



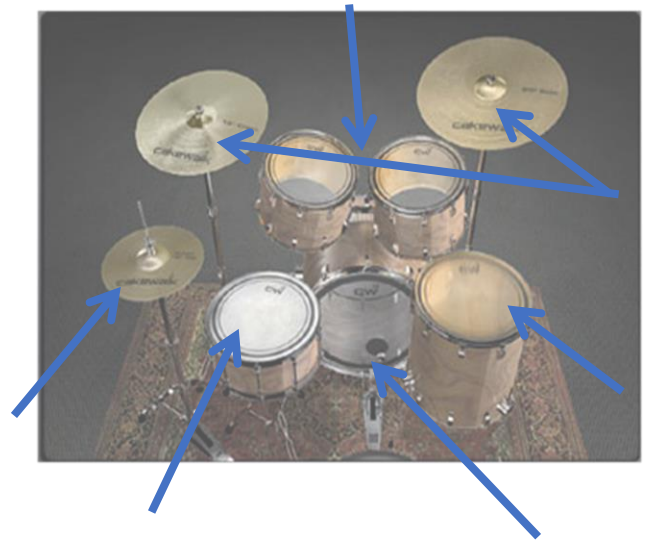
GUITAR



1. Identify which parts of the drum kit are on the Notation below:



2. Label the parts of the Drum Kit:



3. Write the definitions of the following terms:

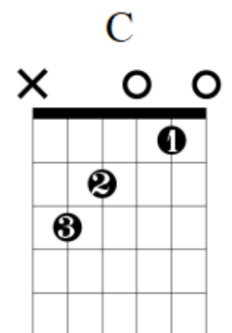
Drum Groove:

Drum Fill:

4. What does a lead guitarist do?

5. What does a Rhythm Guitarist do?

6. Finish the following sentences about Guitar Chord Diagrams:



• The vertical lines represent the _____.

• The horizontal lines represent the _____ with the top line representing the guitar nut.

• The black dots represent where you place your _____.

• The _____ tell you which fingers to use.

• An 'X' tells you to play a string and an 'O' tells you to not play a string

Guitar and Drums Listening

Can you name the song and band from these Electric Guitar Riffs?

- 1.
- 2.
- 3.

What does a Lead Guitarist do?

What does a Rhythm Guitarist do?

Match up the key words below to the correct meanings:

Key Word		Meaning
Fret		Chords played in rhythm
Pick		The name for guitar & drum notation
Tab		Harsh sound created by high frequencies
Hook		Triangular plastic plectrum
Riff		Metal strip to show fingering
Distortion		Short recognisable melody
Strum		Guitarist who plays solos
Lead		Repeated bass melody

Rocking Around the Christmas Tree – Listening Task

1. The song starts with a choir singing and an electric guitar improvising over the top. Which guitarist would be playing the improvised notes? /1

2. What do we call it when a guitarist plays improvised notes on their own? /1

3. How many beats are there in a bar? (circle the correct answer) /1

2

4

8

4. What tonality do you think the song is written in? (circle the correct answer) /1

Major

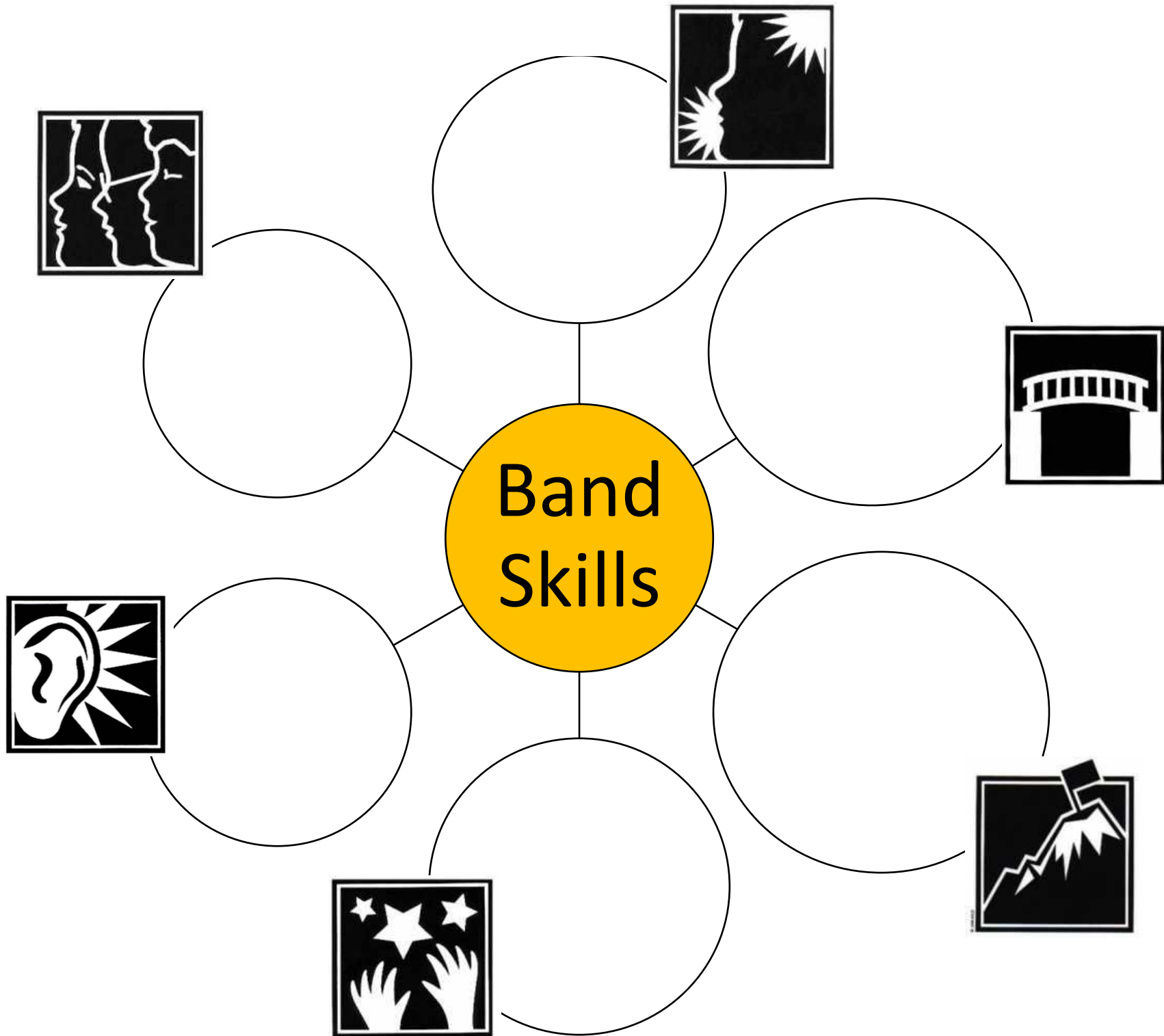
Minor

5. Give a reason for your answer to question 4: /1

6. Which instrument is playing the solo section in the middle of the song? /1

7. Other than the Electric Guitar, name three instruments you can hear playing? /3

TOTAL / 9





Fact Retrieval

What does a Lead Guitarist do? [1 mark]	What is the difference between a riff and a hook? [2 marks]	What is a Leitmotif? [1 mark]
What does a Rhythm Guitarist do? [1 mark]	The vertical lines on the Guitar Chord Diagram represent the ? [1 mark]	What does Underscore mean? [1 mark]
Name three skills you need to play in a band well? [3 marks]	What are the four types of Guitar? [4 marks]	What is the difference between Diegetic and Non Diegetic Music? [2 marks]

Last week	Last month	Way back!
------------------	-------------------	------------------

Total points /16

Learning Question	Success Criteria	Achieved?
<u>Week 6</u> <u>Band Skills</u> How to perform as a band?	Asp: Perform simple parts. (Playing bass / Electric Guitar part on the keyboard, left hand part on the keyboard, playing same part as someone else.)	
	End: Perform more difficult parts. (Bass Guitar part on the guitar, melody part on the keyboard (one hand))	
	Acc: Perform difficult parts. (Electric Guitar chords, both hands on keyboard, Drum Part (Bass, Snare, Hi Hats and cymbals))	
	Asp: Perform your individual parts sometimes accurately. (You can make some mistakes and stops / pauses throughout.)	
	End: Perform your individual parts mostly accurately. (You can make a few mistakes and only occasional stops / pauses throughout.)	
	Acc: Perform your individual parts accurately. (You can make a few mistakes in the more difficult sections and with only occasional stops / pauses.)	
	Asp: Perform in front of your peers.	
	End: Perform with some confidence. (know your part well)	
	Acc: Perform with confidence (eager to perform, know part, well-rehearsed, take a leading role in your group)	
	Asp: Perform, but song may not be finished or is short.	
	End: Perform a finished song.	
	Acc: Perform a finished song with a well organised structure and ending.	
	Asp: Basic overall standard of performance. (Parts will be accurate, but may not be in time with the band.)	
	End: Good overall standard of performance. (accurate parts, in time)	
	Acc: Good overall standard of performance. (Making adjustments, stylistic performance thinking about Dynamics, Tempo and balance of instruments)	

Peer Comment: WWW & EBI: (use the success criteria above to help you)